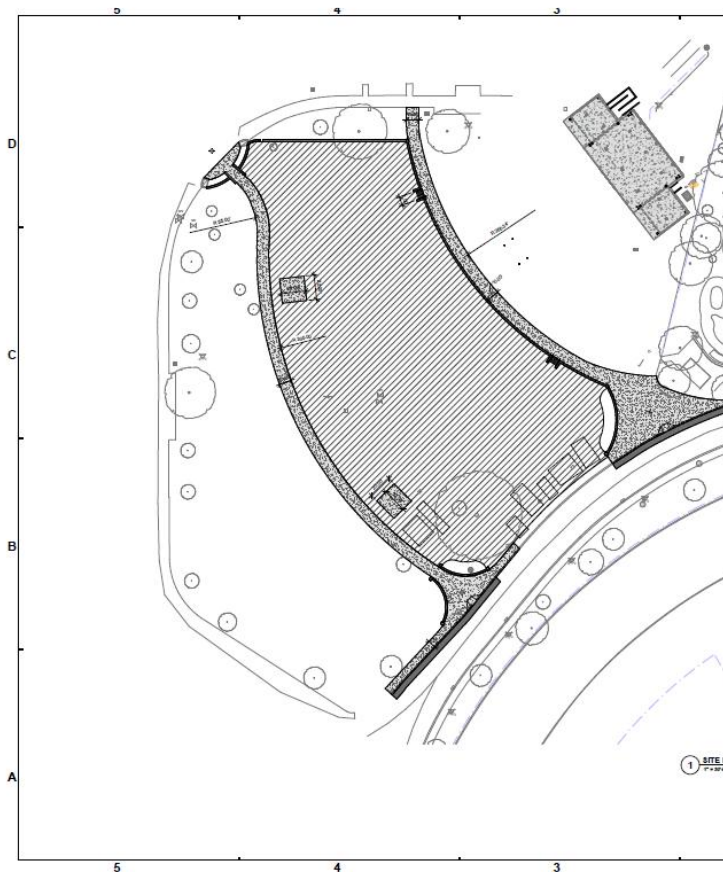
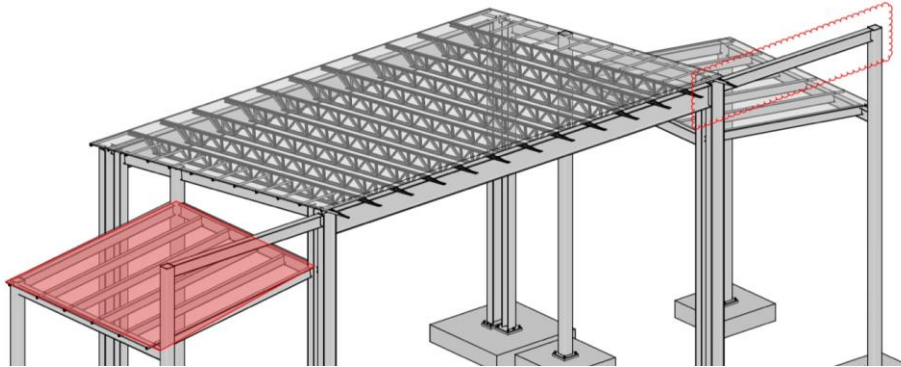




**Indiana State Fairgrounds & Event
Center
1202 E. 38th Street • Indianapolis, IN
46205**

FREE STAGE - Technical Information Sheet



1 SITE LAYOUT PLAN - Phase 2 - Option 2
1" = 30'-0"

STRUCTURE

- Main Stage Deck: 60' wide × 40' deep × 4' high
- Stage Left & Right Wings: 30' wide × 40' deep × 5' high (for monitor world & guitar techs)
- Stage Construction: Permanent concrete deck
- Roof Type: Fixed steel-truss structure
- Roof Height: 30' from top of stage deck to bottom of roof structure
- Total Roof Load Capacity: 92,000 lbs
- Rigging Notes: Structural steel roof system with distributed rigging grid (per-point loads TBD)

POWER

- Main Power Tie-Ins (Stage Left): 400A 3Ø Cam-Lok and 200A 3Ø Cam-Lok
- House Power: Standard 120V circuits available for backline and FOH
- Shore Power: 3 Bus Connections Available with ample parking for production trucks and buses nearby

AUDIO

- PA Hang Capacity: Included within roof structure (counted toward 92,000 lb total)
- FOH Mix Position: Approx. 100' from downstage edge
- Audio Power / Data: Tie-ins available at Stage Left

LIGHTING

- Trim Height: 30' (bottom of roof)
- Hanging Positions: Steel truss grid evenly spaced across stage
- Control: DMX tie-in available at Stage Left

VIDEO

- Video Walls: Dual 10' × 18' LED screens (flown, stage left and right)
- Model: Roe Carbon 5 Mark II
- Pixel Pitch: 5.77 mm
- Mounting: Suspended from roof truss within load limits
- Signal / Power Access: Stage Left

LOAD-IN / LOGISTICS

- Union Labor: I.A.T.S.E. Local 30
- Access: Direct drive-up access to upstage area
- Surface: Concrete throughout (no decking required)
- Parking / Staging: Ample space for trucks and buses adjacent to stage
- Forklift / Lift Access: Available upon request

CONTACT

- Production Manager: Andrew Jones ajones@indianastatefair.com
- Event Manager: Jensen Swaim jswaim@indianastatefair.com
- Buyer: Dan Kemer- dk@mokbpresents.com
- Buyer: Jason King - jk@mokbpresents.com